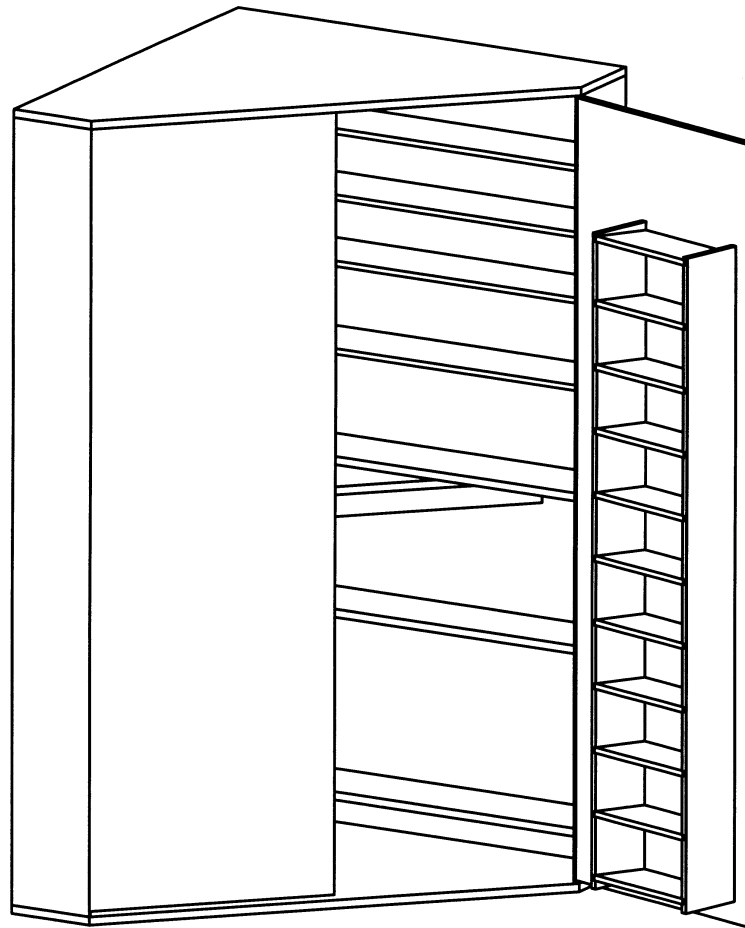


THE INFORMATION CONTAINED IN THIS DRAWING IS THE SOLE PROPERTY OF RAY-VIN ANY REPRODUCTION IN PART OR WHOLE WITHOUT THE WRITTEN PERMISSION OF RAY-VIN.COM IS PROHIBITED.



This reloading bench is based on plans by M.L. McPherson and was printed in the American Rifleman October 1993. I got a poor copy faxed to me by the library system so I redesigned it. These are my drawings.
Regrds, Ray Brandes

ITEM NO.	PART OR IDENTIFYING NO.	NOMENCLATURE OR DESCRIPTION	MATERIAL SPECIFICATION	QTY REQD
PARTS LIST				
UNLESS OTHERWISE SPECIFIED DIMENSIONS ARE IN INCHES TOLERANCES ARE: FRACTIONS DECIMALS ANGLES + .XX+ .XX + 1 .XXX+.XXX		CAD GENERATED DRAWING, DO NOT MANUALLY UPDATE	RAY-VIN.COM	
		APPROVALS	DATE	
		DRAWN RVB	10/9/97	
		CHECKED		
		RESP ENG		
		MFG ENG		
		QUAL ENG		
MATERIAL 3/4 PLY OR PARTICLE				
FINISH -				
DO NOT SCALE DRAWING				
APPLICATION				
NEXT ASSY	USED ON	SIZE A	DWG. NO.	REV.
		SCALE	CAD FILE:	SHEET 1 of 2

8

7

6

5

4

3

2

1

D

C

B

A

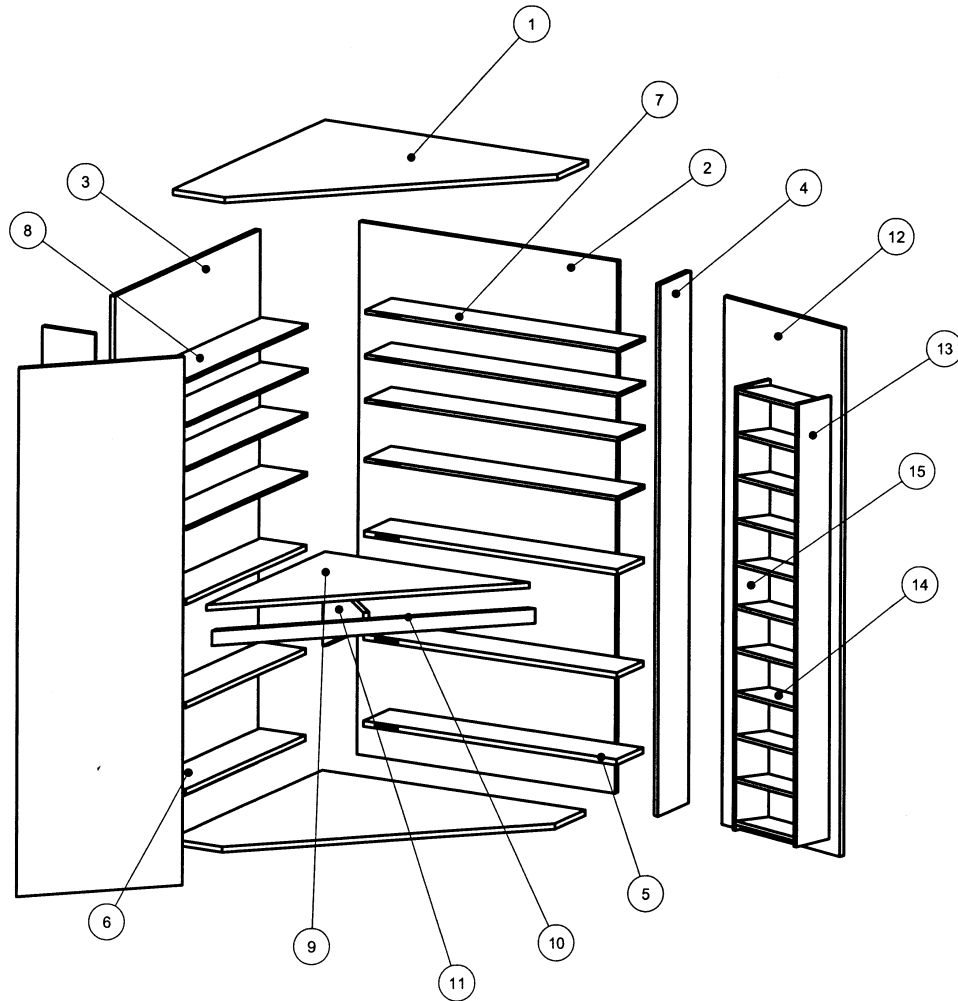
D

C

B

A

THE INFORMATION CONTAINED IN THIS DRAWING IS THE SOLE PROPERTY OF RAY-VIN ANY REPRODUCTION IN PART OR WHOLE WITHOUT THE WRITTEN PERMISSION OF RAY-VIN IS PROHIBITED.



CONSTRUCTION NOTES:

- 1) USE 6" HINGES. IF USING PARTICLE BOARD, BACK UP HINGES WITH ADDITIONAL THICKNESS.
- 2) LEAVE ROOM UP TOP FOR A 4' FLUORSCENT FIXTURE. DON'T MOUNT THE DOOR SHELVES TOO HIGH.
- 3) MAKE AN APRON THAT IS THE SAME THICKNESS AS THE BOTTOM SO YOUR ROLL CHAIR DOESN'T HAVE A STEP TO NAVAGATE.
- 4) LEAVE A 1/2" GAP BETWEEN THE DOOR AND THE BOTTOM SO THE DOORS DON'T DRAG ON THE BOTTOM OR THE APRON.
- 5) MOUNT A DUPLEX OUTLET INSIDE THE UNIT FOR LAMP POWER ETC.
- 6) DOOR SHELVES CAN BE 1/2" THICK.
- 7) DADO 1/4" DEEP GROOVES FOR THE DOOR SHELVES. SET AT AN ANGLE TO THE BACK TO HELP KEEP THINGS FROM ROLLING OUT.
- 8) USE BISCUITS OR SOME OTHER REINFORCEMENT AT THE SHELF INTERSECTION
- 9) GLUE AND FASTEN WITH 1-3/4" DRYWALL SCREWS.
- 10) PAINT OR OTHERWISE SEAL THE WOOD.
- 11) DON'T USE PARTICLE BOARD IF SUBJECT TO WET FLOOR.

You may want to substitute a 2 x 4 for item 10, the cross brace.

ITEM NO.	QTY.	PART NO.
1	2	Top-Bottom
2	1	Back
3	1	Side
4	2	Jamb
5	3	3-4 long
6	3	3-4 short
7	4	1-2 long
8	4	1-2 short
9	1	Press Mount
10	1	Cross Brace
11	1	Brace
12	2	Door
13	2	Door Shelf Side A
14	22	Door Shelf
15	2	Door Shelf Side B

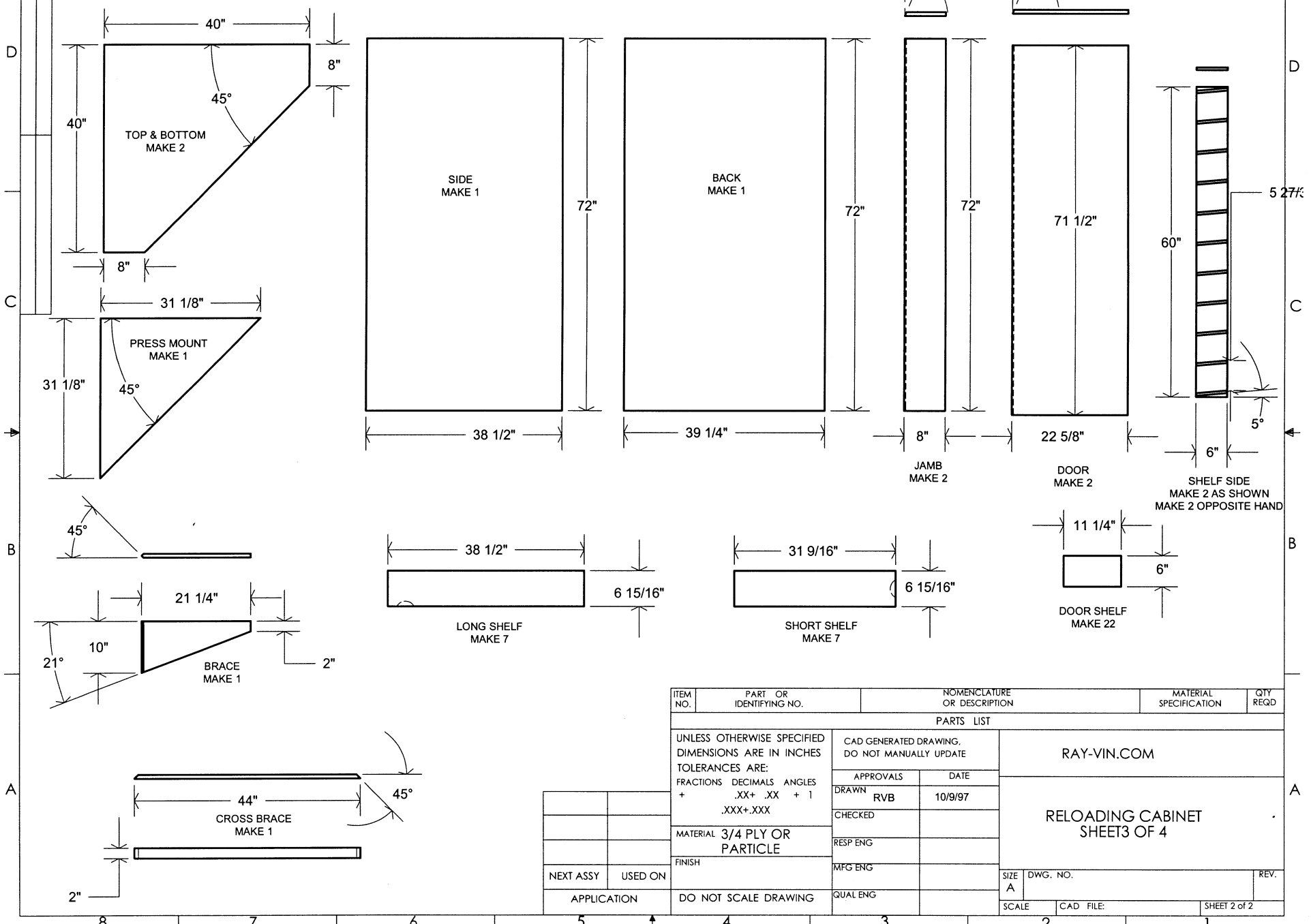
ITEM NO.	PART OR IDENTIFYING NO.	NOMENCLATURE OR DESCRIPTION	MATERIAL SPECIFICATION	QTY REQD
PARTS LIST				
UNLESS OTHERWISE SPECIFIED DIMENSIONS ARE IN INCHES TOLERANCES ARE: FRACTIONS DECIMALS ANGLES + .XX+ .XX + 1 .XXX+.XXX		CAD GENERATED DRAWING, DO NOT MANUALLY UPDATE	RAY-VIN.COM	
		APPROVALS	DATE	
		DRAWN RVB	10/9/97	
		CHECKED		
		RESP ENG		
		MFG ENG		
		QUAL ENG		
NEXT ASSY	USED ON	FINISH	SIZE DWG. NO.	REV.
APPLICATION		DO NOT SCALE DRAWING	SCALE	CAD FILE:
			SHEET 2 of 2	

8 7 6 5 4 3 2 1

D
C
B
A

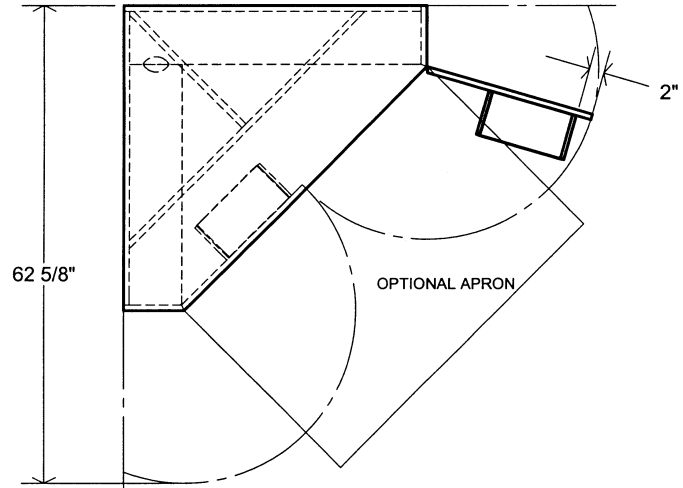
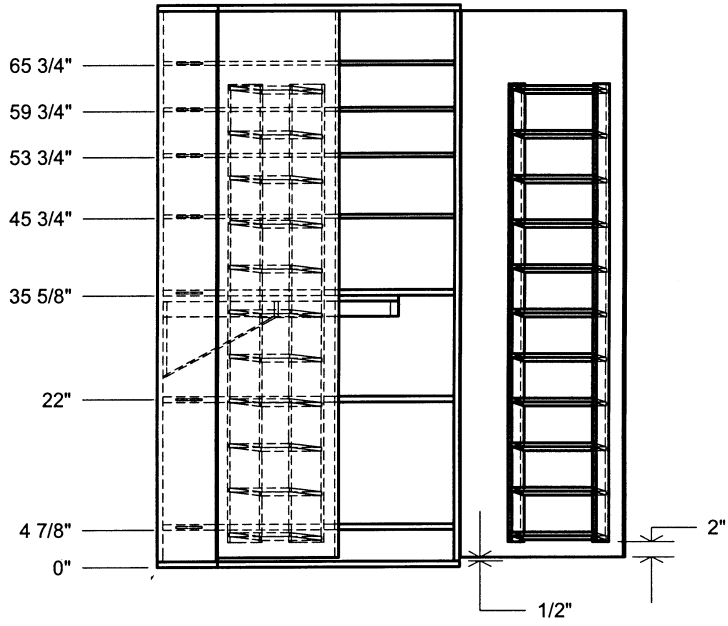
D
C
B
A

THE INFORMATION CONTAINED IN THIS DRAWING IS THE SOLE PROPERTY OF RAY-VIN ANY REPRODUCTION IN PART OR WHOLE WITHOUT THE WRITTEN PERMISSION OF RAY-VIN IS PROHIBITED.



ITEM NO.	PART OR IDENTIFYING NO.	NOMENCLATURE OR DESCRIPTION	MATERIAL SPECIFICATION	QTY REQD
PARTS LIST				
UNLESS OTHERWISE SPECIFIED DIMENSIONS ARE IN INCHES TOLERANCES ARE: FRACTIONS DECIMALS ANGLES + .XX+ .XX + 1 .XXX+.XXX		CAD GENERATED DRAWING. DO NOT MANUALLY UPDATE	RAY-VIN.COM	
MATERIAL 3/4 PLY OR PARTICLE		APPROVALS	DATE	
FINISH		DRAWN	10/9/97	
NEXT ASSY		CHECKED	RESP ENG	
USED ON		MFG ENG	QUAL ENG	
APPLICATION		DO NOT SCALE DRAWING		
SIZE A		DWG. NO.		REV.
SCALE		CAD FILE:		SHEET 2 of 2

THE INFORMATION CONTAINED IN THIS DRAWING IS THE SOLE PROPERTY OF RAY-VIN ANY REPRODUCTION IN PART OR WHOLE WITHOUT THE WRITTEN PERMISSION OF RAY-VIN IS PROHIBITED.



ITEM NO.	PART OR IDENTIFYING NO.	NOMENCLATURE OR DESCRIPTION	MATERIAL SPECIFICATION	QTY REQD
PARTS LIST				
UNLESS OTHERWISE SPECIFIED DIMENSIONS ARE IN INCHES TOLERANCES ARE: FRACTIONS DECIMALS ANGLES + .XX+ .XX + 1 .XXX+.XXX		CAD GENERATED DRAWING. DO NOT MANUALLY UPDATE	RAY-VIN.COM	
MATERIAL 3/4 PLY OR PARTICLE		APPROVALS	DATE	
FINISH		DRAWN	10/9/97	
NEXT ASSY USED ON		CHECKED		
APPLICATION		RESP ENG		
		MFG ENG		
		QUAL ENG		
		SIZE A	DWG. NO.	
		SCALE	CAD FILE:	
				SHEET 2 of 2

RELOADING CABINET
SHEET 4 OF 4

D
C
B
A

D
C
B
A

8 7 6 5 4 3 2 1